



Laurelhurst Survey Progress

January 2018

What is a Survey?



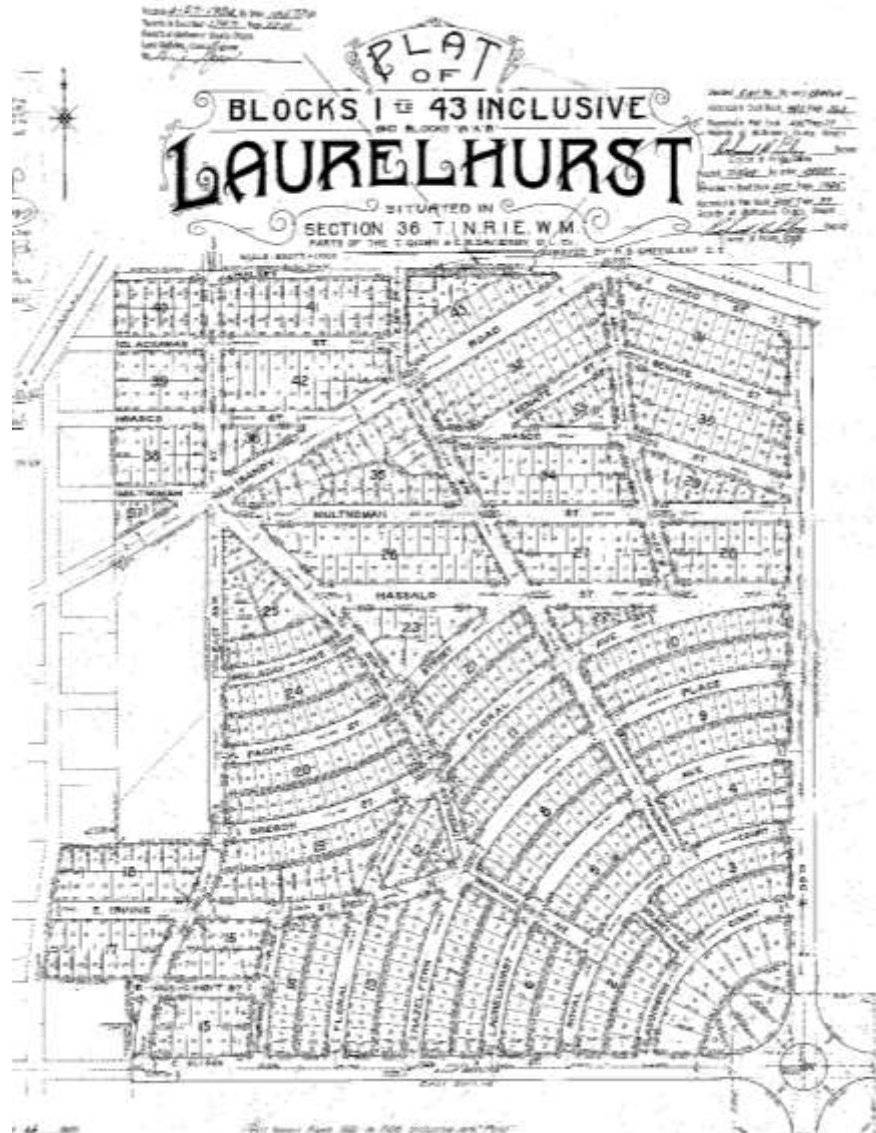
Reconnaissance Level Survey/Inventory:

- “Light” research and Context
- Field work and Evaluation
- Survey Report

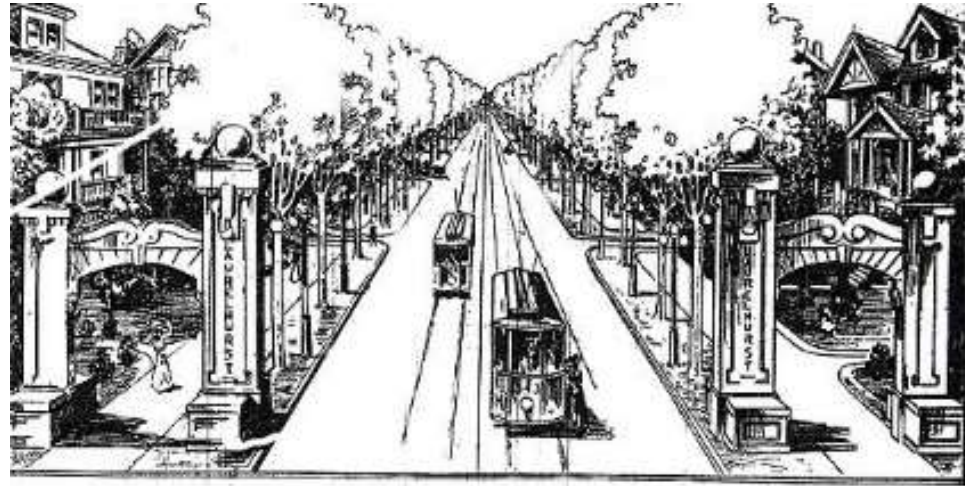
Information:

- Construction date, features, integrity, style, materials, setting, photos from the ROW





History and Development



Context:

- CITY BEAUTIFUL MOVEMENT (Larger American context 1890-1920)
- STREETCAR SUBURB (Larger American context 1888-1928)

Potential Nomination Areas of Significance:

- Community Planning and Development
- Architecture
- Landscape Architecture



Street Character



Street setbacks and sidewalks



SE Oak Court (alley)



Sidewalk stamps and curb rings



Street trees



Gates



Styles

Italianate
Queen Anne
Empire
Romanesque
Vernacular/ Farm
Shingle

Greek Rev.
Gothic Rev.

Beaux Arts
Tudor/
English cottage
Colonial Rev.
Mediterranean Rev.

Prairie School
Art Nouveau
Streetcar Commerc’l
Craftsman
Cascadian

Ranch
Brutalist
Post-Modern

Streamline Moderne
Art Deco
Stripped Classical
International style
NW Regional

							Modern	
						Early Modern		
				American Forms				
				Historic Period Styles				
			Early Colonial Revival					
			Late Victorian/eclectic styles					
	Renaissance & baroque revivals							
Classical & medieval revivals								
1840-1855	1855-1870	1870-1885	1885-1900	1900-1915	1915-1930	1930-1945	1945-1960	1960-1975

Timeline for most popular Styles of Oregon Architecture



Colonial Revival

What to look for: SYMMETRY, CLASSICAL PEDIMENTS/ COLUMNS, MINIMAL PORCH, MULTIPANE WINDOWS



Craftsman

What to look for: GABLED ROOF, WIDE EAVES & RAFTER TAILS, WIDE PORCH, SQUARE COLUMNS, BRACES



English Cottage

What to look for: ASYMMETRY, STEEP/ MED. PITCH ROOF, MINIMAL EAVES, "THATCHING," MULTIPANES, RECESSED PORCH & ARCHED ENTRY



Doubles



Doubles



Stylistic Combinations & Unique Architecture



Historic Photos for Comparison



4225 NE Laddington Ct.



Historic Photos for Comparison



4347 NE Flanders



Historic Photos for Comparison



Historic Photos for Comparison



4103 SE Pine



Integrity

- Resources with Excellent or Good integrity can be evaluated as ES (eligible/Significant) or EC (eligible/Contributing).
- Resources with Fair or Poor integrity will be evaluated as NC (Not Eligible/Non-Contributing) or NP (Not Eligible/Out of Period).
- Remember a secondary structure on the site will also be valued as being either contributing or non-contributing.
- Elements of integrity include:
 - Plan and volume
 - Cladding/ Siding
 - Windows
 - Other features – porches, etc.



Integrity



Additions



Integrity



Integrity



Features



Project Progress

- Completed SE quad; currently working in NE quad- about 1/3 surveyed
- In-field survey completion by late spring 2018
- ILS (if any) also late spring 2018
- Potential first-draft nomination by June 2018



Project Help

- U of O Preservation Program first-year grad students will be helping us in the field as well as helping input data
- Laurelhurst volunteers: 3 so far plus another who would like to help with photos in the field.
- Laurelhurst research volunteer
- People have given us information in the field- particularly several people on SE Ash St.
- Historic photos? Plans? Knowledge about past alterations?
- <https://www.laurelhurstpdx.org>

